

HOCPP 1098

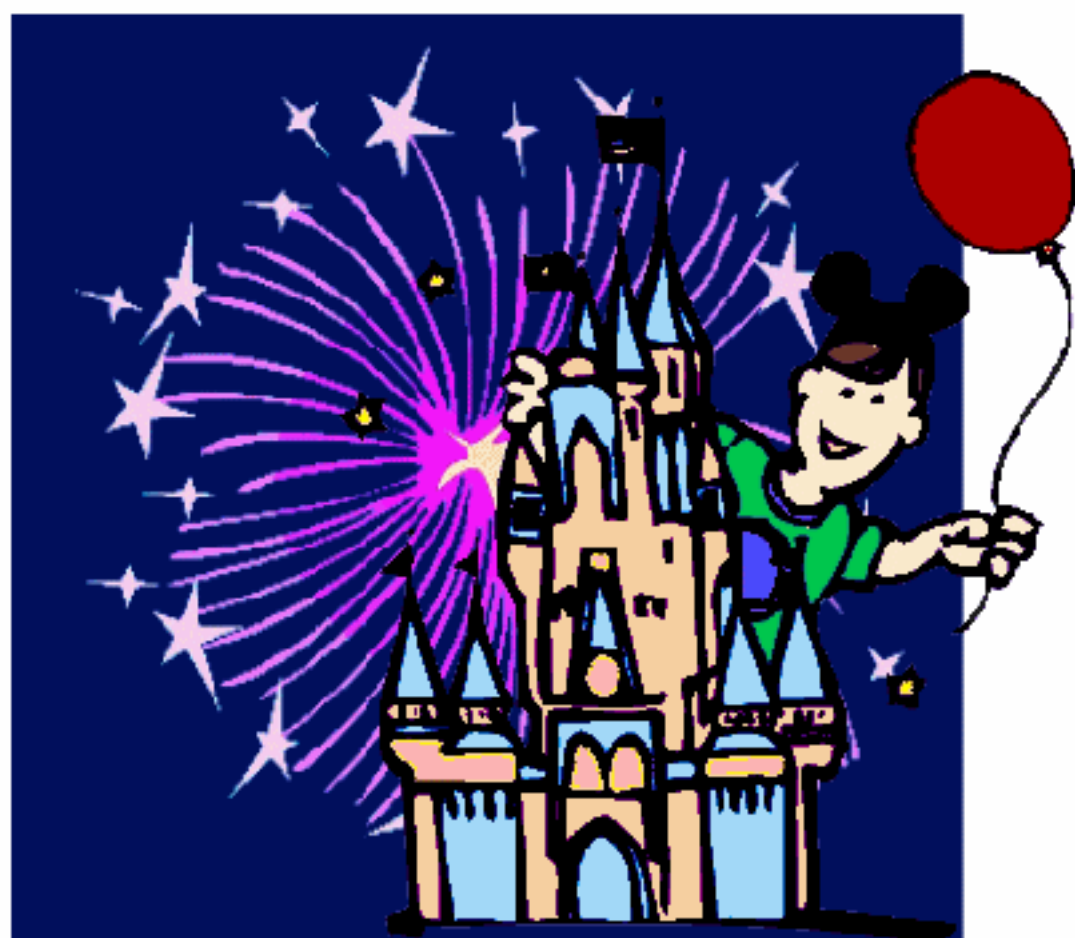
In The Hands of A Child



Elementary - Middle

Custom Designed Project Pack

Disneyland



**A Ready-to-Assemble
Hands-On Unit
Including Reproducibles**

Disneyland

© 2006 In the Hands of a Child
www.handsofachild.com

Research Guide written by Katie Kubesh
Activities written by Niki McNeil
Graphics and Editing by Kimm Bellotto

From the time we first began using Project Packs we fell in love with them. We knew that this type of hands-on learning experience was just the thing that was needed to make boring academics not only educational but, fun and exciting too!

To help get you started we have included some of the questions we receive about Project Packs.

What is a Project Pack?

A Project Pack is simply a great way of compiling key points from your studies into one spot that can easily be stored and available to be reviewed at any time

How does this help me? and Why is this a better way for learning?

The number one reason is the students will retain the information covered so much faster. Children learn by doing. Project Packs put learning into their hands!

Another reason is it is a convenient way to store those wonderful projects. Students can go back and review them at any time and your schoolroom or refrigerator is not cluttered with bits and pieces of their projects.

And the final reason is they are great and the possibilities are endless! There are no age limits and no subject lines that cannot be worked into a Project Pack. We will be adding many units to help you in the education of your students.

How do I make a Project Pack?

A Project Pack is simply a file folder refolded into a shutter style book. Open it flat and then fold the sides into the middle creasing neatly and there you have it.

For a more colorful and eye-appealing Project Pack it is suggested that some of your Reproducibles be printed out on colored multi-purpose paper.

What supplies do I need?

You will want to have file folders, paper of different colors and weights, your students' favorite coloring tools, tape, glue, scissors, and a stapler.

Adapting a Project Pack to Fit the Needs of Your Student

Adapting a Project or Research Pack is key to ensuring that you provide the best lesson for your student. At first glance, some might just skip over an activity because they feel it is too easy or too difficult for their student. We want you to use all the activities we provide...they are easily adaptable!

For example, if you have a PK-3 student the vocabulary activities might be difficult for him or her to complete. Here are some tips to help you adapt the activities that require your student to write:

1. Have your student dictate vocabulary words and their meanings as you write them.
2. Have your child draw a picture instead of writing.
3. You write the word or sentence first so your student can see how it is written.
4. Practice. Practice. Practice. In the car, on a walk, in the shopping cart! Practice saying the vocabulary words and what they mean. Before you know it your preschooler will be telling others what those words mean!
5. Contact us. We would be happy to give you ideas for adapting specific units to a grade level.

On the other hand, some of the activities may seem too easy for your student. Does your 5th grade level student want to learn about butterflies, but the Project Pack seems too easy? Try it anyway; just change things up a bit to suit that grade level. Here are some tips to help you adapt the activities to make them a little more difficult.

1. In addition to writing down vocabulary words and their meanings, ask your student to use the word in a sentence; either verbally or written.
2. Give your student 1 hour (or other reasonable time frame) to research the topic on their own; either online or at the library. Give your student a set of questions or see what he/she can find without your guidance.
3. Encourage your student to expand on the topic or choose a related topic to learn about.
4. Take a look at some of our preschool units...there is lots of clipart related to each topic. Have your older student cut these out and write a story or play about the pictures or perform a play.
5. Contact us. We would be happy to give you ideas for adapting specific units to a grade level.

These are just a few ways you can adapt a Project Pack to meet the needs of your student. Let your student be the judge if something is too easy or too difficult...you just might be surprised!

The Website links we have included in our guides are references we found that contain relevant information. However, the sites are not owned or maintained by In the Hands of a Child. The content may have changed or become a “dead” link. If you find the site contains inappropriate material or is no longer a site, please let us know!

Table of Contents

Guide	Page 3
Timeline	Page 3
The Idea	Page 3
Building of the Park	Page 4
Opening Day	Page 4
Layout	Page 5
Tips	Page 7
Transportation	Page 9
Fast Pass	Page 10
Walt Disney	Page 10
Mickey Mouse	Page 11
Anaheim	Page 11
Around the World	Page 12
Vocabulary	Page 13
Activity List	Page 15
Activity 1	Page 16
Activity 2	Page 20
Activity 3	Page 23
Activity 4	Page 25
Activity 5	Page 27
Activity 6	Page 29
Activity 7	Page 31
Activity 8	Page 33
Activity 9	Page 35
Activity 10	Page 37
Activity 11	Page 39
Activity 12	Page 41
Activity 13	Page 43
Activity 14	Page 45
Activity 15	Page 48

Activity 16	Page 51
Activity 17	Page 55
Activity 18	Page 57
Activity 19	Page 60
Activity 20	Page 62
Activity 21	Page 64
Activity 22	Page 66
Folder Instructions	Page 69

would be like. Popular attractions in Tomorrowland include Autopia (1955), Buzz Lightyear Astro Blasters (2005), Space Mountain, and the Disney Monorail System.

“Tomorrow can be a wonderful age. Our scientists today are opening the doors of the Space Age to achievements that will benefit our children and generations to come...The Tomorrowland attractions have been designed to give you an opportunity to participate in adventures that are a living blueprint of our future.”

~Walt Disney



- New Orleans Square is one of the last additions made to Disneyland that was overseen by Walt Disney. This land opened in 1966 and captured the architecture of Bourbon Street in New Orleans. Two of the most popular Disneyland attractions are located here, Haunted Mansion and Pirates of the Caribbean. Visitors can also see Fantasmic! This is a popular nighttime show with Mickey Mouse, fireworks, fountains, lasers, pirate ships, and much more.
- Critter Country first opened in 1972 and was called “Bear Country.” Its main attractions are Splash Mountain and The Many Adventures of Winnie the Pooh.
- Mickey’s Toontown, which opened in 1993, was created to be like Toontown that is featured in the movie *Who Framed Roger Rabbit*. This land is built to look like the town where Disney characters live. Toontown is home to Mickey’s House,

(Disneyland Tips continued)

11. Birthday, don’t forget to visit City Hall! They have a surprise for you.
12. For a perfect view of the fireworks, stand in front of the Sleeping Beauty Castle near the compass in the cement.
13. Lines for rides tend to be shorter 30 minutes prior and during parade times.
14. Want to do some shopping, but don’t want to carry all your purchases through the park? When you pay for your purchases ask for Package Express-it’s free! The cashier holds on to your packages, gives you a claim ticket and your purchase is waiting for you at the Main Gate when you leave (check times it will be ready for pickup sometimes it can take 2 hours). If you stay at the Disneyland Hotel or Disney Pacific, Package Express will deliver your purchases to the hotel for you.
15. Don’t forget that some attractions, like Tom Sawyer Island, close at dusk. Make sure you visit them during the early morning or afternoon.



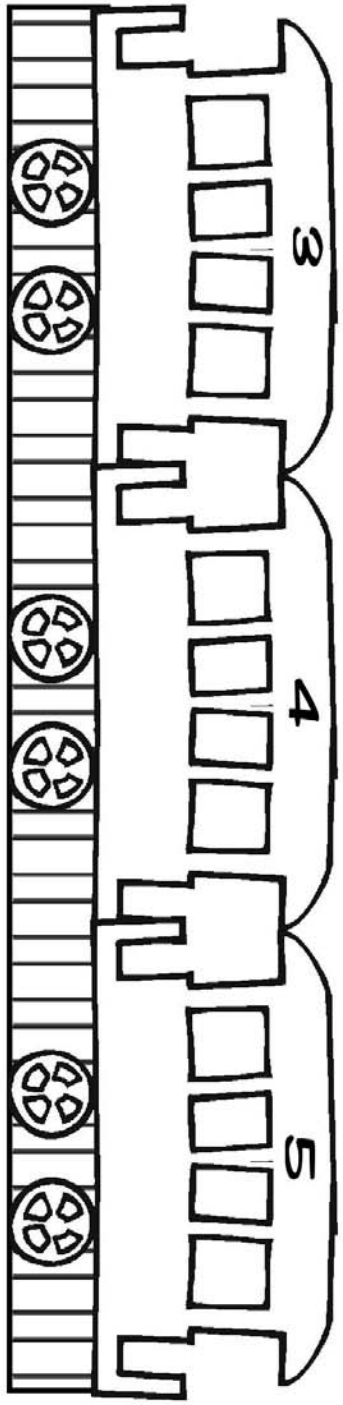
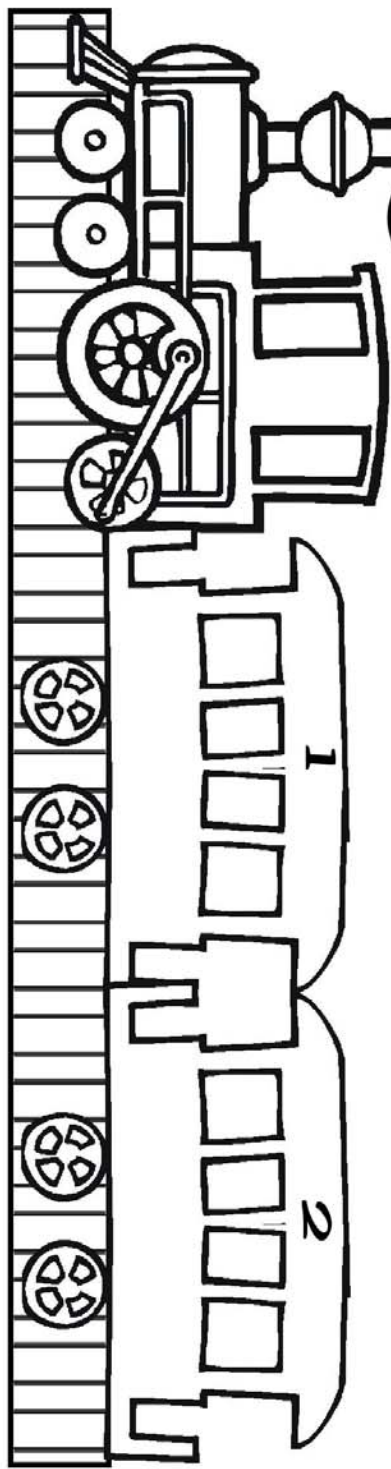
1. Vocabulary
2. Create your own timeline
3. How much was general admission to Disneyland in 1955? How much in 2000? How much in 2006?
4. What was the name of Walt Disney's original idea for a theme park?
5. How much did Disneyland cost? How long did it take to build? How did Walt Disney get help to pay for Disneyland?
6. List three things that went wrong on opening day.
7. What did Walt Disney and other Disney employees call Sunday, July 17?
8. How is Disneyland split up? Give brief details. Compare the two areas. Which area sounds the most exciting to you? Why?
9. How many themed lands are there in Disneyland? Name them all.
10. Which land is your favorite? Why?
11. You are a new designer for Disneyland. Your first task is to design a new theme land. What is the theme and name of your new land? List three attractions you will have in your new land.
12. Why aren't visitors allowed in the backstage areas?
13. What are the 5 ways to get around in Disneyland?
14. What is a FastPass and how does it work?
15. What are some tips for a good time at Disneyland?
16. Write a brief biography about Walt Disney.
17. Draw a picture of Mickey Mouse.
http://www.malanenewman.com/mickey_mouse_fullface.html
18. Create a new Disney-style character. Create a comic strip starring your new character.
19. In which region of California is Anaheim located?
20. What is Anaheim known for?
21. Where are other Disney theme parks located? Using the map provided, mark the cities where a Disney theme park is.
22. Plan a trip (or an imaginary trip) to a Disney theme park. Fill out the Vacation Itinerary Items.

Activity 13:

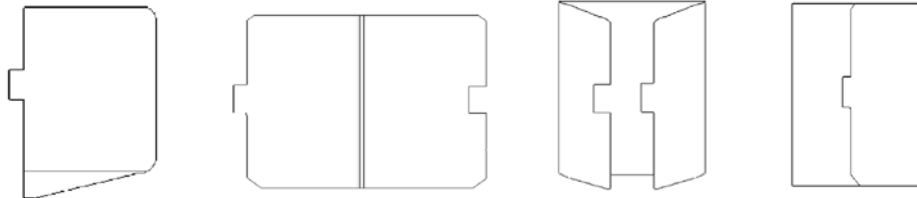
What are the 5 ways to get around in Disneyland?

- On the graphic that follows list the different ways to get around
- Run the train across the bottom of your project pack

Park
Transportation



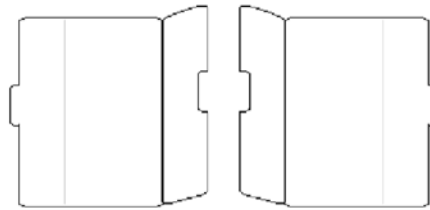
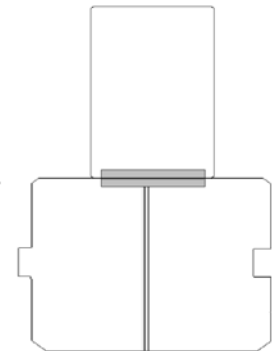
Instructions to Re-fold a Folder



Normal Fold:

Open folder flat

Fold both the right and left edge to the center crease creating a shutter
 Cut a folder in half OR use a piece of cardstock to form your extension
 Lay the extension in the center of the shutter fold folder
 Attach at the top end using clear packing tape



Double Folder:

Open folder flat

Fold both the right and left edge in toward the center crease creating a shutter

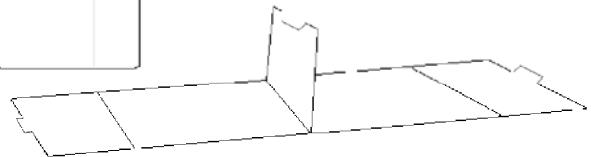
Do this again with a second folder

Set both folders side by side with their shutters opened (pointing straight up not flat)

In the center where the two folders meet glue the outer flaps of each shutter together connecting the two folders

Fold both shutters closed and flip over and close

The back of one of the folders becomes your cover



***You can add extensions to a double folder using the same method as for a single folder.

Favorite
Photo
Date



General
Admission



Opening Day
Words



We Welcome
You



How would the world

Today

What began
a century

Disneyland
Timeline

Main
Areas

FastPass

What's a
FastPass?

How do a
Good One

Disney Report
Disney



