

HOCPP 1159

In The Hands of A Child

Grades 3 - 8



Project Pack Sled Dogs



**A Ready-to-Assemble
Hands-On Unit
Including Reproducibles**



Thank you for your purchase from
In the Hands of a Child
Your Premiere Lapbook Provider since 2002!!

Sled Dogs
HOCPP 1159
Published: March, 2007

Authors:
Katie Kubesh
Niki McNeil
Kimm Bellotto

For information about other products available from In the Hands of a Child
Call 1-866-426-3701 or visit our website at www.handsofachild.com.

Entire contents of this Project Pack © 2007
In the Hands of a Child.
6222 Pierce Street
Coloma, MI 49038

Permission is hereby granted to the individual purchaser to reproduce student materials in this project pack for noncommercial individual or classroom use only. In the Hands of a Child gives permission for one copy of all written material to be copied and or printed. Classroom teachers have permission to reproduce one copy for each student in class. Members of co-ops or workshops have permission to reproduce one copy for up to 10 children per unit. Reproducible graphics may be reprinted as many times as needed. Permission is not granted for school wide or system wide reproduction of materials.

Printed in the USA.

Bringing Laughter and Learning Together In the Hands of a Child

From the day we first began using and creating Project Packs we fell in love with them. We knew that this type of hands-on learning experience was just the thing that was needed to make boring unit studies not only educational but fun and exciting too!

To help you get started with your Project Pack, we have included some of the most frequently asked questions we receive about our Project Packs.

What is a Project Pack?

A Project Pack contains both the activities and the lesson plans or research guide needed to complete the activities. Imagine your child not only learning about the life cycle of a butterfly, but also creating a cocoon of his or her own. Students don't just read the story, *Blueberry Sal* by Robert McCloskey- they enjoy a "blue day" complete with a recipe for blueberry pancakes, making a "blue" collage, and don't forget painting a "blue" picture!

Why is this a better way to learn? How does this help me?

Student learning improves when lessons incorporate hands-on projects or crafts. Children learn by doing. Project Packs put learning into their hands! The possibilities are endless when your student begins a lapbook with a Project Pack from In the Hands of a Child. There are no age or skill limits and any topic or subject can be worked into a Project Pack.

When you purchase a Project Pack from In the Hands of a Child, all the work is done for you-the parent/teacher, but not for the student. In addition, Project Packs are easy to store, are an instant review tool, scrapbook, and a ready-made portfolio of all your student's studies.

How do I make a Project Pack?

A Project Pack is simply a file folder refolded into a shutter-style book. Open a file folder flat, fold each side into the middle and crease the fold neatly. There you have it!

What supplies do I need?

You need file folders, paper in different colors and weights*, your student's favorite coloring tools, tape, glue, scissors, and a stapler.

*For a more colorful and appealing Project Pack, it is suggested you print some of the reproducible graphics on colorful, multi-purpose paper. We recommend 24# weight or cardstock.

Adapting a Project Pack to Fit the Needs of Your Student

Adapting a Project or Research Pack is key to ensuring that you provide the best lesson for your student. At first glance, some might just skip over an activity because they feel it is too easy or too difficult for their student. We want you to use all the activities we provide...they are easily adaptable!

For example, if you have a PK-3 student the vocabulary activities might be difficult for him or her to complete. Here are some tips to help you adapt the activities that require your student to write:

1. Have your student dictate vocabulary words and their meanings as you write them.
2. Have your child draw a picture instead of writing.
3. You write the word or sentence first so your student can see how it is written (many of our Project Packs also include activities with dotted lines for easy copy work).
4. Practice. Practice. Practice. In the car, on a walk, in the shopping cart! Practice saying the vocabulary words and what they mean. Before you know it your preschooler will be telling others what those words mean!
5. Contact us. We would be happy to give you ideas for adapting specific units to a grade level.

On the other hand, some of the activities may seem too easy for your student. Does your 5th grade level student want to learn about butterflies, but the Project Pack seems too easy? Try it anyway; just change things up a bit to suit your student's grade level and skill. Here are some tips to help you adapt the activities to make them a little more difficult:

1. In addition to writing down vocabulary words and their meanings, ask your student to use the word in a sentence; either verbally or written.
2. Give your student one hour (or reasonable time frame) to research the topic on his or her own either online or at the library. Give your student a set of questions and see what he or she can find without your guidance.
3. Encourage your student to expand on the topic or choose a related subject to learn about.
4. Take a look at some of our preschool units...there is a lot of clipart related to each topic included. Have an older student cut these out and write a story or play about the pictures.
5. Contact us. We would be happy to give you ideas for adapting specific units to a grade level.

These are just few ways you can adapt a Project Pack to meet the needs of your student. Let your student be the judge if something is too easy or too difficult...you just might be surprised!

Table of Contents

Guide	Page 8
History	Page 8
Types of Sled Dogs	Page 8
Alaskan Malamute	Page 9
Siberian Husky	Page 9
Sled Dog Breeding	Page 9
Inuit Eskimo	Page 10
Alaskan Husky	Page 10
Balto	Page 10
Sled Dog Racing	Page 11
Types of Races	Page 11
Training	Page 12
Sled Dog Teams	Page 13
Communication	Page 13
Musher Commands	Page 13
Diet	Page 14
Food Care	Page 14
Equipment Costs	Page 14
Equipment	Page 15
Vocabulary	Page 17
Activity List	Page 19
Activity 1	Page 21
Activity 2	Page 23
Activity 3	Page 24
Activity 4	Page 25
Activity 5	Page 27
Activity 6	Page 30
Activity 7	Page 32
Activity 8	Page 33
Activity 9	Page 34

Activity 10	Page 36
Activity 11	Page 37
Activity 12	Page 38
Activity 13	Page 39
Activity 14	Page 40
Activity 15	Page 41
Folder Instructions	Page 42
Sample Pictures	Page 43

Sled Dogs



You are a doctor in Greenland and you have just found out that a patient who lives 25 miles away needs you. She is going to have a baby and you need to travel fast to get to her. It is the middle of winter; snow and ice have made the terrain almost

impassable. Do you jump in your 4-wheel drive truck and hurry to help your patient? Do you jump on your snowmobile and speed to her rescue? You cannot do either. Why? Because it is one hundred years ago and there is no such thing as a 4-wheel drive truck or a snowmobile! How will you get to your patient? What can help you make the 25-mile journey through ice and snow?

You can make the journey to save your patient with a little help from man's best friend. Luckily, you have a team of sled dogs that can help you make this long and dangerous journey to save your patient. Simply **hitch** them to your sled and yell, "Hike!"

History

Before snowmobiles and 4-wheel drive vehicles, people who lived in the northern regions of the United States, Canada, Greenland, Siberia, Norway, and Finland, relied on teams of dogs to travel in the winter. Sled dogs were able to pull people and freight over areas that were otherwise impossible to cross.

Alaskan malamutes and Siberian huskies were the two most common breeds of dogs used in sledding. Malamutes were used by a group of Eskimo people called the Mahlemiut. They used the dogs to carry food to their villages. In 1896, the Alaskan Gold Rush created a large demand for malamute sled dogs.

The Chukchi people of northeastern Siberia used the Siberian huskies. The Chukchi used the dogs for herding reindeer and pulling loads. During the Alaskan Gold Rush of 1896, Siberian Huskies were exported to Alaska to help transport freight and people.

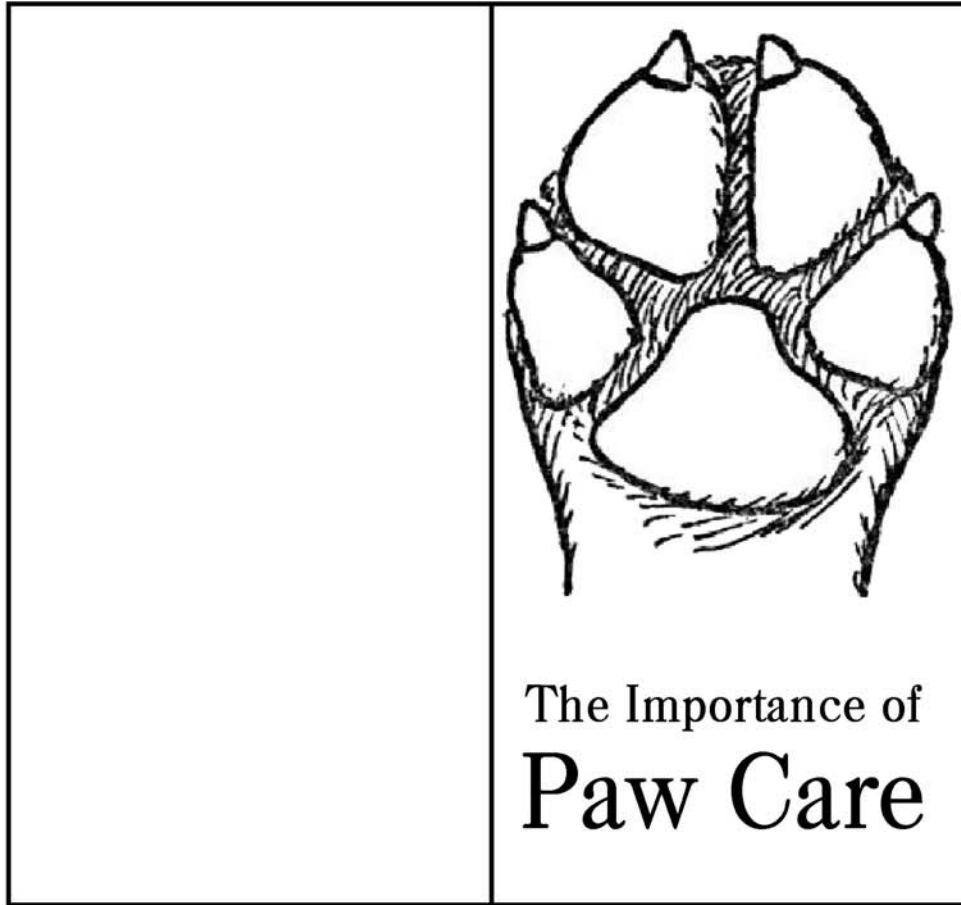
Today, driving sled dogs is a popular winter recreation and sport practiced in Europe and North America.



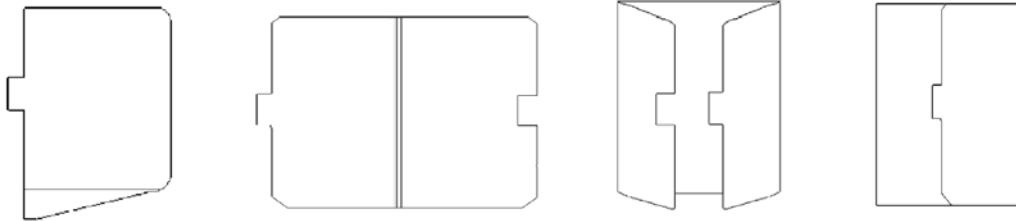
Types of Sled Dogs

Sled dogs are burley, strong, fast dogs that were the lifeblood for many people in the northern world during the winter. There are four common or main breeds of dogs used as sled dogs including Alaskan malamute, Siberian husky, Inuit/Eskimo Dog, and Alaskan husky.

Activity 13



Instructions to Re-fold a Folder



Normal Fold:

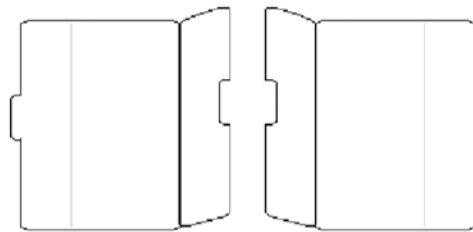
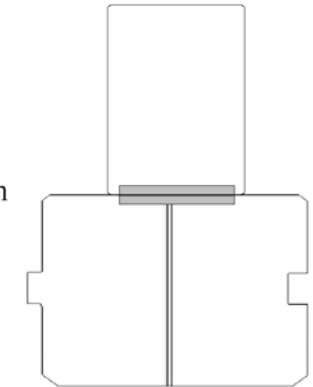
Open folder flat

Fold both the right and left edge to the center crease creating a shutter

Cut a folder in half OR use a piece of cardstock to form your extension

Lay the extension in the center of the shutter fold folder

Attach at the top end using clear packing tape



Double Folder:

Open folder flat

Fold both the right and left edge in toward the center crease creating a shutter

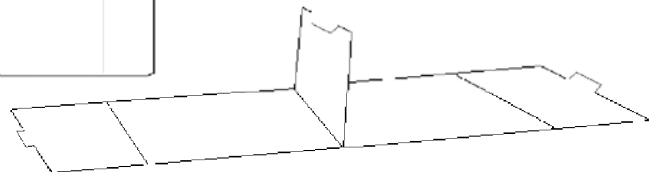
Do this again with a second folder

Set both folders side by side with their shutters opened (pointing straight up not flat)

In the center where the two folders meet glue the outer flaps of each shutter together connecting the two folders

Fold both shutters closed and flip over and close

The back of one of the folders becomes your cover



***You can add extensions to a double folder using the same method as for a single folder.

